

NCSI Introduction to Parallel Programming and Cluster Computing

Idaho State University

Welcome to Idaho State University and Pocatello, Idaho. I think you will have a very good time at the workshop and learn a great deal of valuable information. To help make your trip a pleasant one here are some details that will aid you in your planning and your stay here in Pocatello.

Air travel

For people flying into Pocatello (**PIH**), we recommend:

Sunday June 26: Delta #7765: Arrive at PIH 2:46pm

Friday July 1: Delta #7766: Depart from PIH 6:22pm

For people flying into Idaho Falls (**IDA**), take into account a one hour drive time including rental car pickup and drop-off, we recommend:

Sunday June 26: Delta #4456: Arrive at IDA 2:43pm

Friday July 1: Delta #4542: Depart from IDA 6:20pm

OR

Sunday June 26: United #6533/US Airways #7661: Arrive IDA 4:48pm

Friday July 1: United #6533/US Airways #7661: Arrive IDA 6:20pm

People flying into Salt Lake City (**SLC**) will need to use a rental car or the Salt Lake Express shuttle to travel from Salt Lake to Pocatello and then use a taxi to travel from the drop-off location in Pocatello to the Idaho State University campus (see details on check-in below). It is a scenic 2 1/2 hours drive from the Salt Lake City airport to Pocatello.

Ground transportation

If you are flying into Salt Lake and need to use the shuttle, you can book your ride by visiting

<http://www.saltlakeexpress.com/>

Phone number (local) 208-656-8824, toll free 800-356-9796

Taxi service in Pocatello is limited. We recommend **Checker Cab**. You can call Checker from the Salt Lake City airport and let them know your arrival time. I have already contacted them and they will meet you at the Pocatello airport and transport you to campus. Call **Frank Bromeo of Checker Cab at 208-200-8814**.

Other taxi services are available by visiting: http://www.pocatello.us/airport/airport_transportation.htm

Rental cars are available by visiting http://www.pocatello.us/airport/airport_transportation.htm OR

<http://www.avis.com>

<http://www.budget.com>

<http://www.hertz.com>

Idaho State University

There are four buildings you will get to know during your stay. They are (1) Turner House (947 Memorial Dr.), (2) The Rendezvous building (1111 Martin Luther King Way), (3) Graveley Hall (743 S. 8th Ave), and (4) Gale Life Sciences (650 Memorial Dr.).

Visit our campus web map by clicking <http://ags.giscenter.isu.edu/campusmap/isu/>



1. Turner House
2. The Rendezvous bldg.
3. Graveley Hall (GIS Center)
4. Gale Life Sciences

Figure 1. Overview map of ISU campus

When you arrive on the ISU campus, you will first need to check-in and get your room. On Weekends **check-ins are at Turner House.**

You can then walk (or continue your taxi) to **The Rendezvous**, where your room is located. It is approximately 1/4 mile from Turner to the Rendezvous.

Our workshop will begin at 6:30pm on Sunday June 26th with a kick-off orientation and pizza party dinner. This event will be held at the GIS Center in **Graveley Hall**. The GIS Center is located in rooms B19-B22 in the basement of the south wing of Graveley Hall (figure 2).

All regular meals will be served in the **Turner House cafeteria**. Meals are served as follows:

Breakfast 7:00 am - 8:30 am

Lunch 11:00 am - 1:00 pm

Dinner 5:00 pm - 6:30 pm

Workshop instruction and open lab periods will be held in **Gale Life Sciences, room 205** (figure 3)

If you need any assistance preparing for your trip to Pocatello or while you are attending the workshop, contact Keith Weber. He can be reached best by e-mail at webkeit@isu.edu

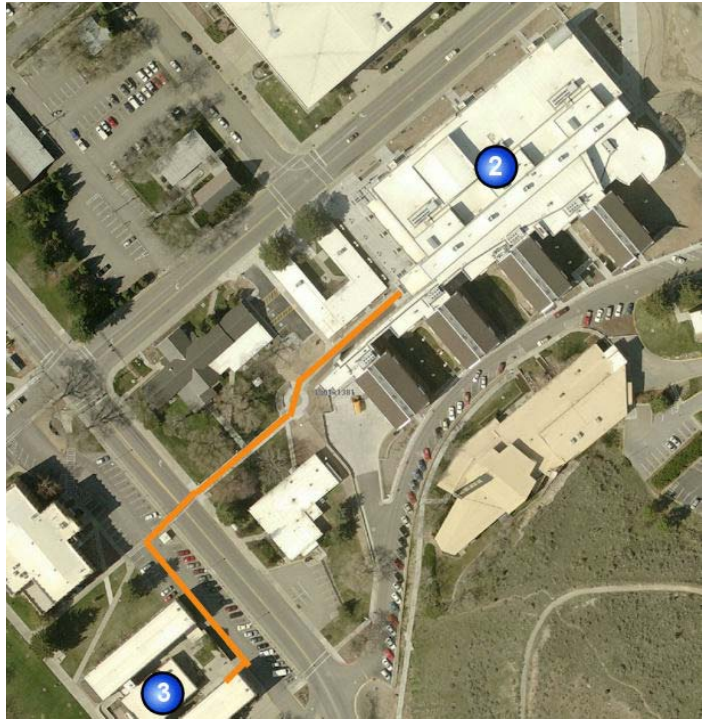


Figure 2. Route from the Rendezvous to Graveley Hall

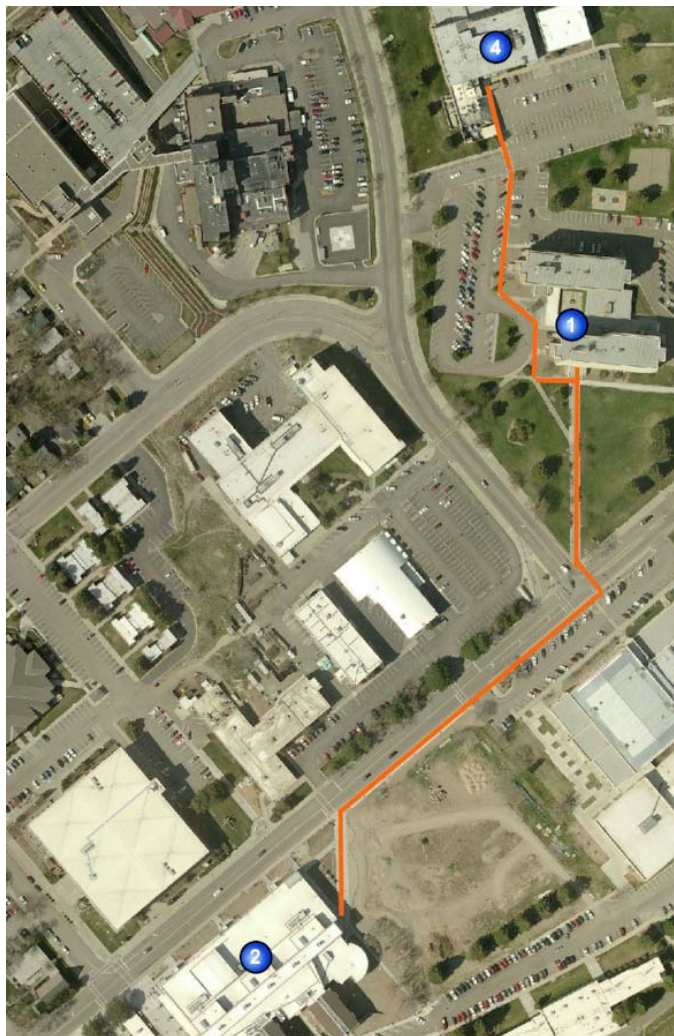


Figure 3. Route from the Rendezvous to Gale Life Sciences.

INTERNET ACCESS

Free internet access will be available in the classroom/lab. In addition, the Internet is accessible through campus Wi-Fi using your own laptop or other Wi-Fi device outside the classroom. If you need to use ISU's Wi-Fi please complete the guest access form found at <http://www.isu.edu/netel/Wireless%20Guest%20Access%20Form.pdf> and send it to Keith Weber (webekeit@isu.edu). You will then be given the username and password to connect. You can also print the completed form and turn it on during the workshop.

PARKING

If you will have a rental car and requiring parking at Idaho State University, please contact Keith Weber (webekeit@isu.edu) as soon as possible so parking arrangements can be made.