

A day in the life of a systems engineer...

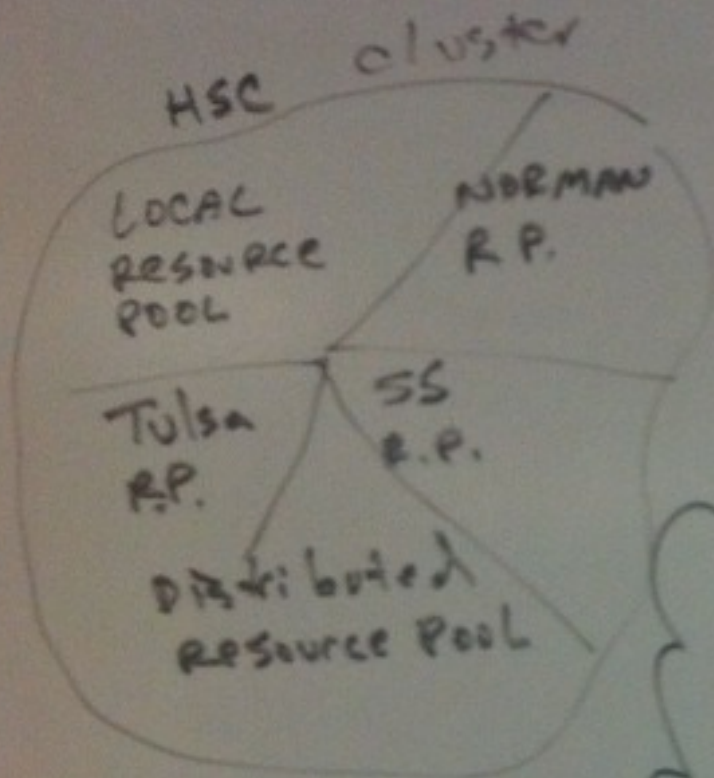
Kendall George
Operations Manager, Shared Services Cloud
The University of Oklahoma
kendallg@ou.edu
kg@kendallgeorge.com
[@kendallgeorge](#)

December 6, 2012

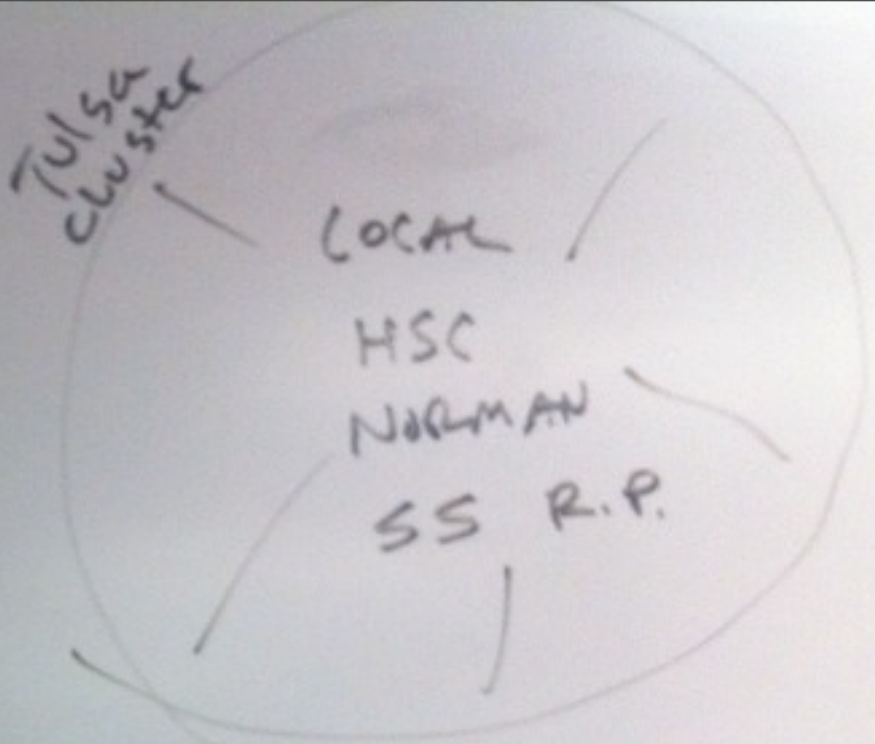
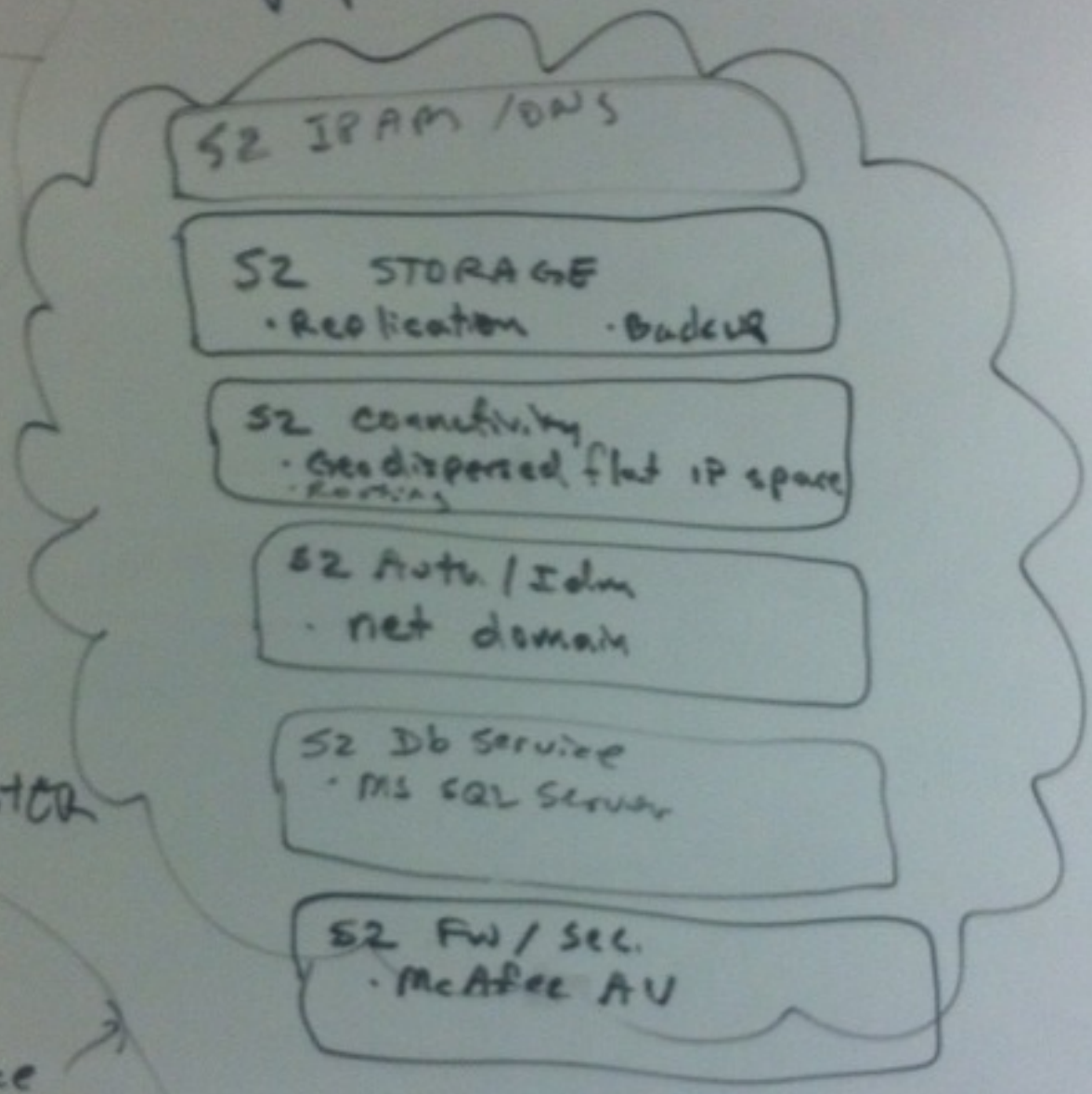


Who is Kendall?
systems engineer
15+ years
3 continents
AF comm officer
private sector
higher ed
BA
MBA
VCP
podcaster
MS, Linux, Apple
non-partisan

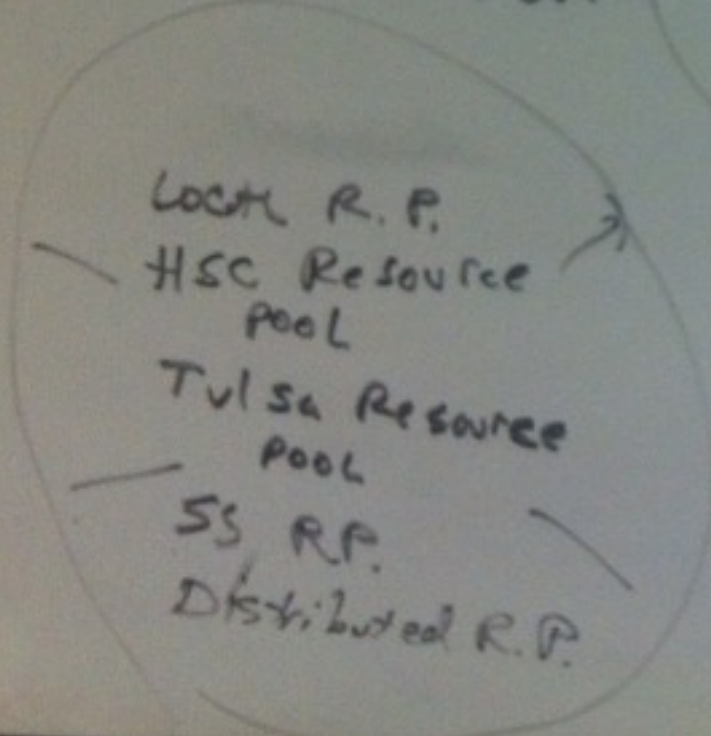
QUIT



vSphere Replication



NORMAN CLUSTER



3 campuses.
Many data centers.

Sea

**PRELIMINARY
NOT FOR
CONSTRUCTION**

Project

Four Partners Place
University of Oklahoma
UNIVERSITY RESEARCH CAMPUS
NORMAN, OKLAHOMA

Issue Date:
October 12, 2010 -
60% Check Set

Revisions

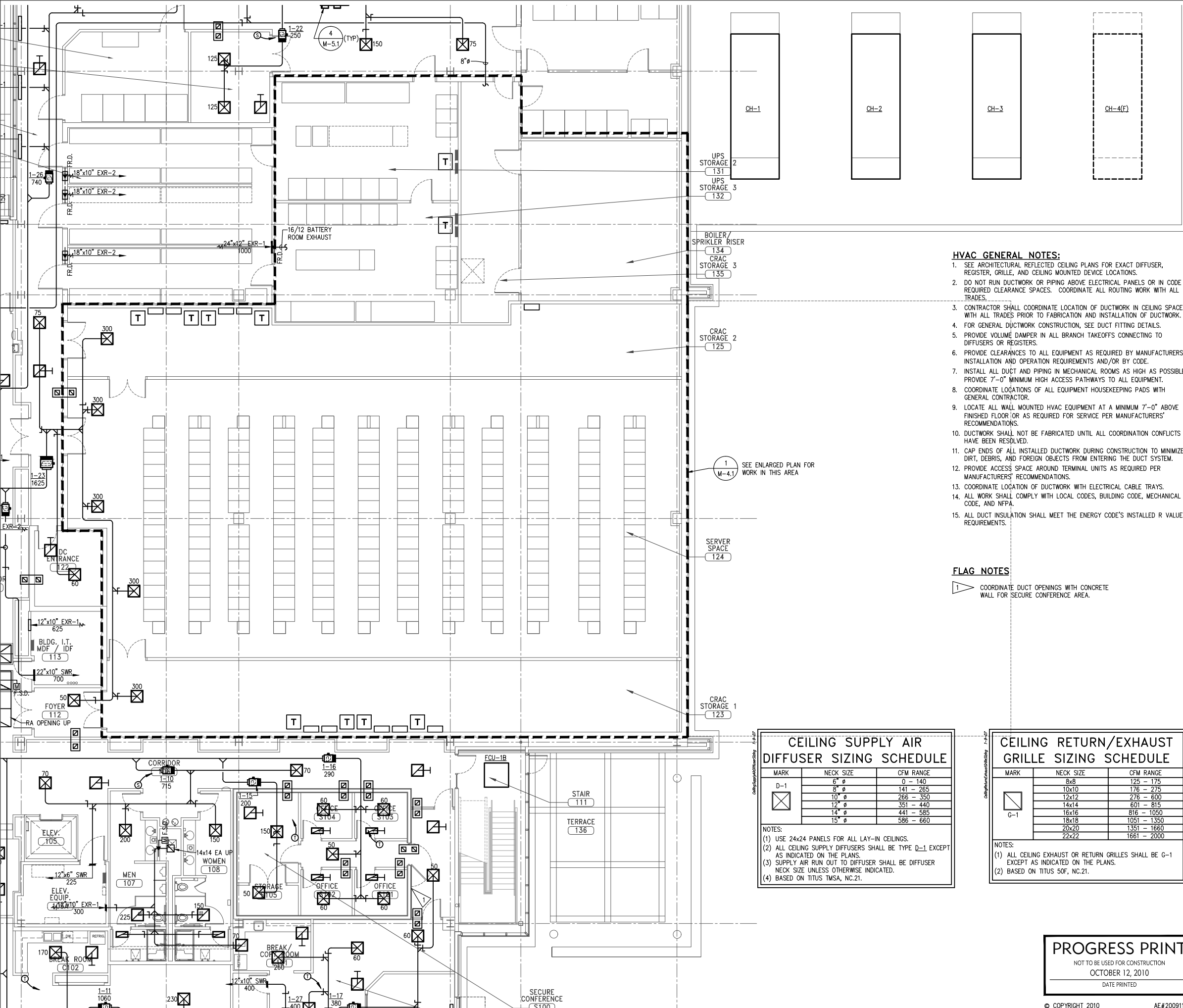
PROGRESS PRINT

NOT TO BE USED FOR CONSTRUCTION
OCTOBER 12, 2010

DATE PRINTED:

© COPYRIGHT 201

AE#2009118







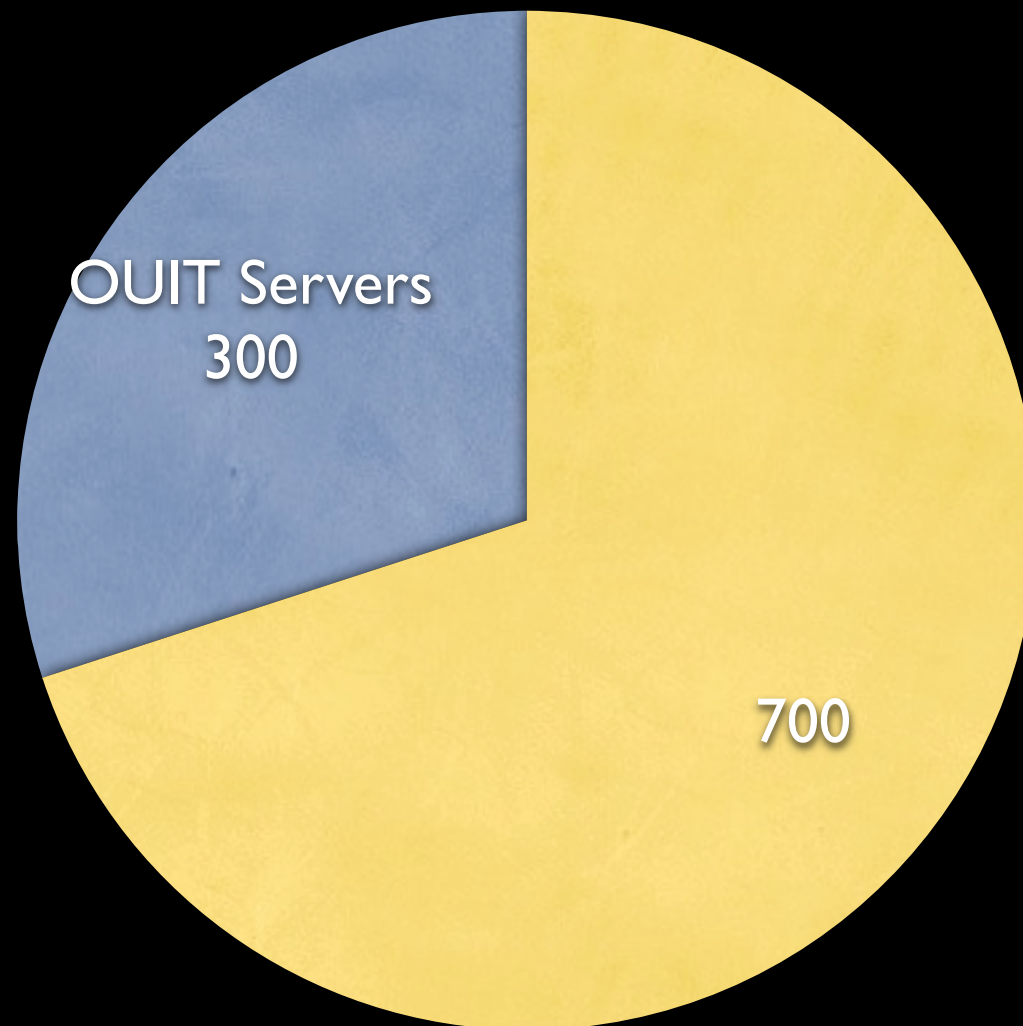


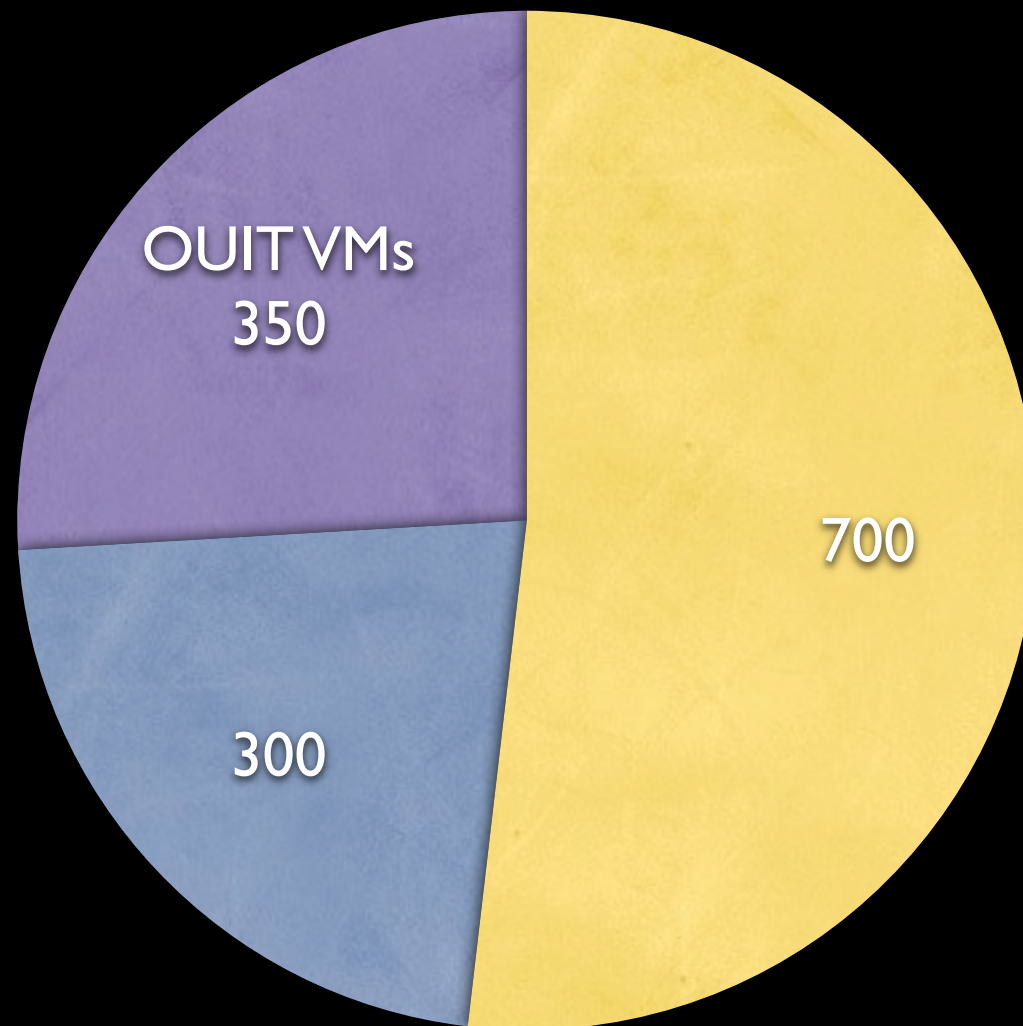


Finite. But, complex.



I,000 Total Servers





Applications

- Lids Cost
- Fiber Cost

HARON
LICENSING
SUPPORT

FACILITY
ADMIN
Networking

service

Backup

Content List

Implementation	
VOICE	James
Applications	BRUCE
VMWARE	G3
IAM	McClaw Randy
Firewalls / Security	
DNS	LMT
Network	Zane Overall / Runia
Storage	Andu
	Kardall, G3, Rosa, Gansley
Facilities	Shane

SOC [IDS, IPS, AV]
Firewall, TAPS

SOTT
Gate → DC Switching

→ DMZ
→ WAN

Possible interactions

Now: Cable Power, Racks, Elevation

Then: HW Maint, Repair

ENV. Monitoring



A bunch of stuff
everybody does...

back-up
archiving file shares
developer support budgeting Services DHCP
facilities monitoring monitoring SharePoint
Web messaging license management authentication
certificate management benefits management Video
imaging application virtualization CMS Terminal Server
Remote Desktop accounts management Apache
collaboration directory services document imaging
system patching Conferencing accounting
www.ou.edu provisioning human resources
payroll virtualization database Xythos Voice Mail
WebEx finance Anti-Virus DNS
IdM email Plesk

Stuff specific to
education...

A word cloud featuring various university systems and services. The words are arranged in a cluster, with some overlapping. The colors used are orange, blue, and white. The words include: video capture, tutoring, computer labs, Athletics, Appointment Management, game footage, Electronic Medical Records, learning management system, classroom scheduling, iTunes, UID cards, student system, payment systems, payment card system, cash registers, degree advising, distribution, and Health Clinic.

video capture tutoring
computer labs Athletics
Appointment Management game footage
Electronic Medical Records learning management system
classroom scheduling iTunes UID cards
student system payment systems payment card system
degree advising cash registers
distribution Health Clinic

Also research...

supercomputing GISweather

Pretty good list, but I'm leaving a bunch out.
Like cameras, one off apps, parking, golf...



And other stuff. I don't mean to be comprehensive.
And, of course, security must be “baked in.”

Who?

TRAINING

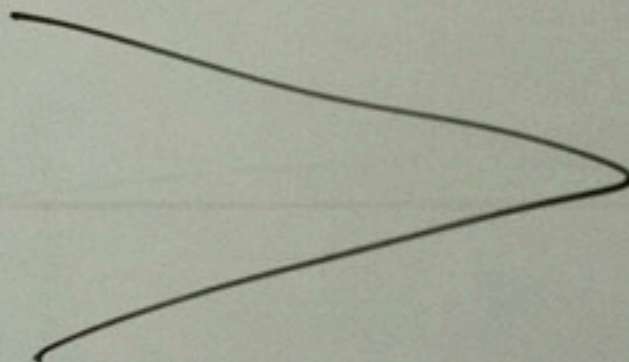
SUPPORT

TECH

Promotion

- Doc Collab.

- Workflow





About 15 people.



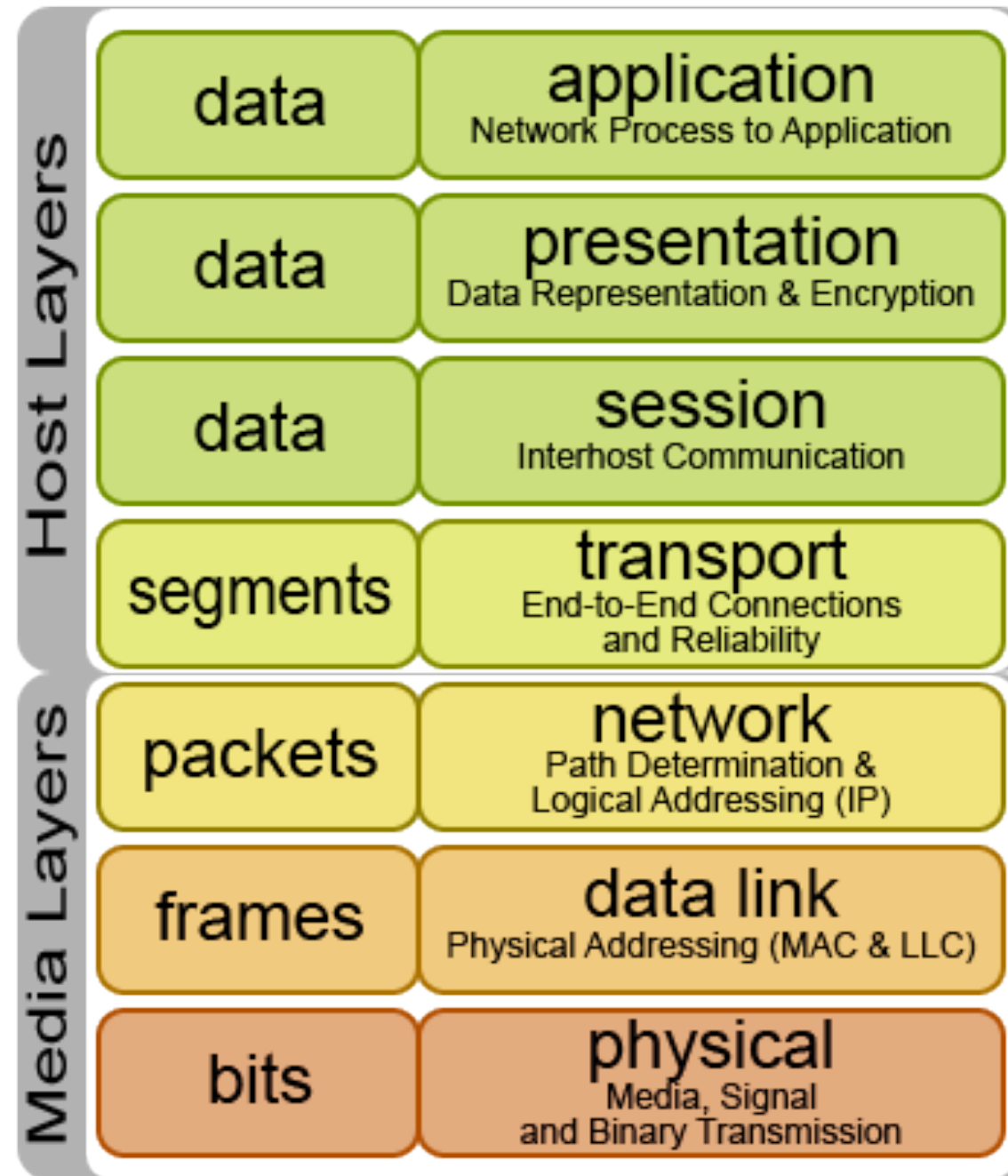


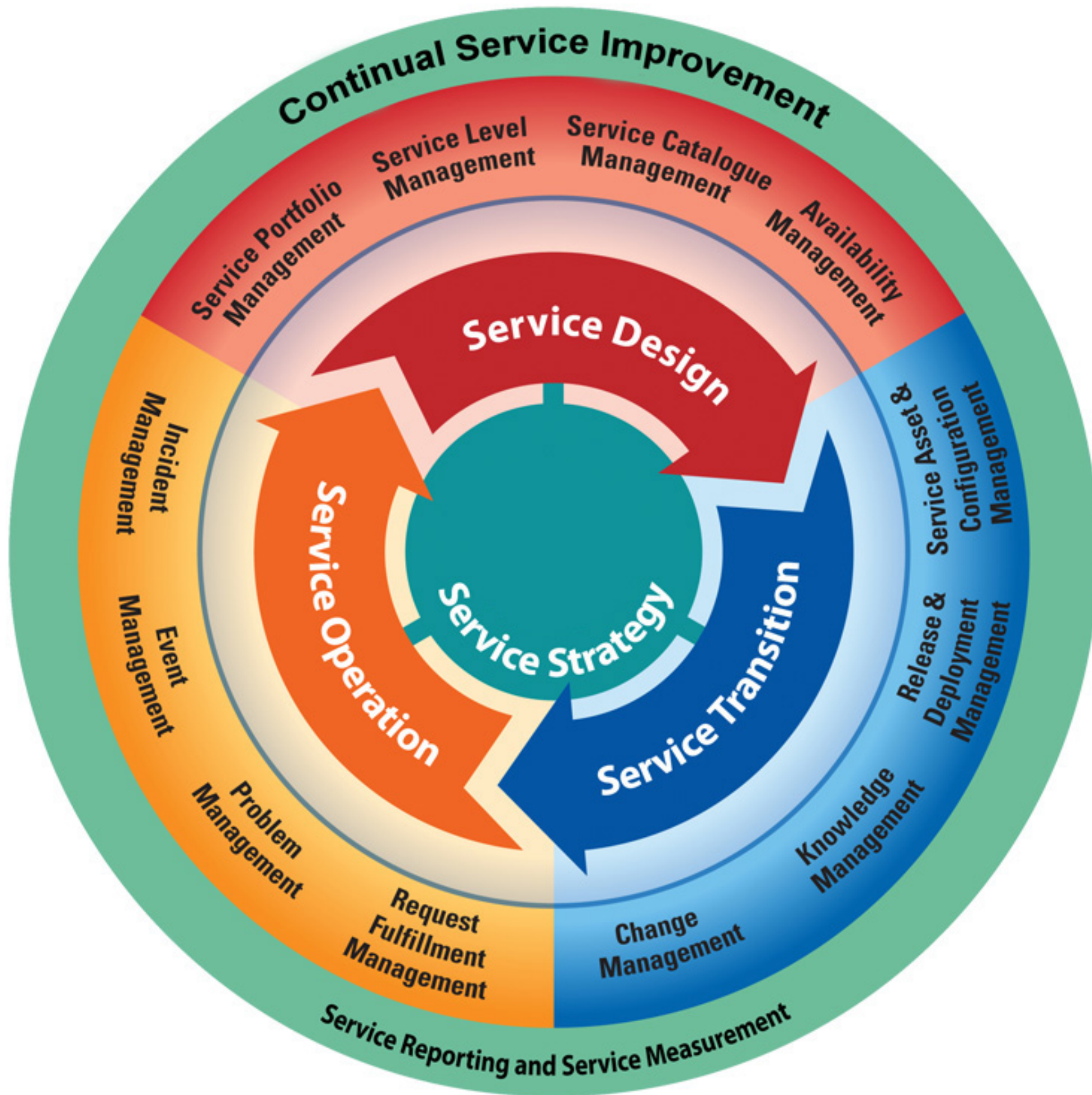
What do we do?

OSI Model

data unit

layers





Engineering.

Design Considerations

- Standardization
- Enterprise
- Resiliency
- Availability
- Business continuity
- Disaster recovery



host profile

storage profile

standard monitoring
and metrics

system profile

hypervisor

OS

networkhost



Image by UNKNOWN.

Friday, December 7, 12

TEST

PRE PROD

PROD

VLAN 296

SP TEST 1

SP prep 1/2

SP PROD 1 & 2

VLAN 797

SP TEST A

SP PREP A/B

SP PROD A/B

VLAN

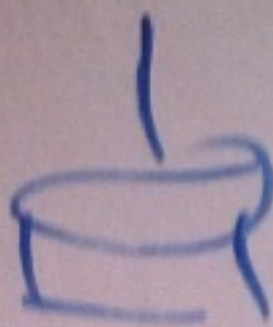
Shoofly

Chret

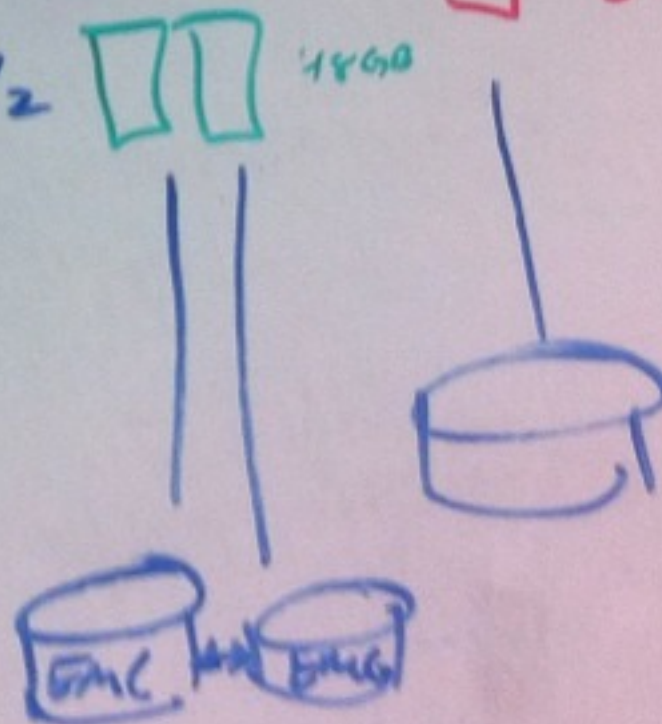
new 3
12GB

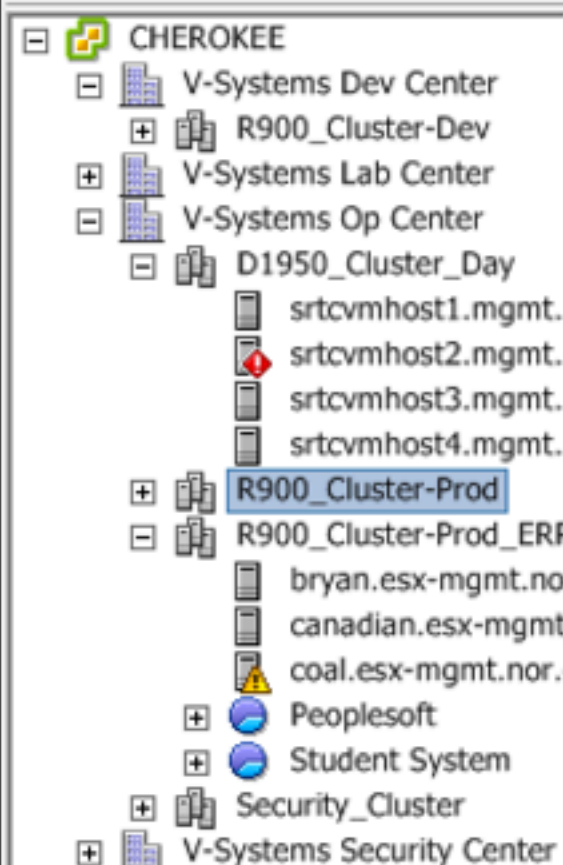
new 1/2

18GB



?





R900_Cluster-Prod

Summary Virtual Machines Hosts DRS Resource Allocation Performance Tasks & Events Alarms Permissions Maps Profile Com

General

vSphere DRS:	On
vSphere HA:	On
VMware EVC Mode:	Intel® "Merom" Gen. (Xeon® Core™2)
Total CPU Resources:	487 GHz
Total Memory:	927.93 GB
Total Storage:	36.47 TB
Number of Hosts:	9
Total Processors:	208
Number of Datastore Clusters:	0
Total Datastores:	76
Virtual Machines and Templates:	198
Total Migrations using vMotion:	303

Commands


-  New Virtual Machine
-  New Datastore Cluster
-  Add Host
-  Edit Settings
-  New Resource Pool

vSphere HA

Admission Control:	Enabled
Current Failover Capacity:	4 hosts
Configured Failover Capacity:	1 host
Host Monitoring:	Enabled
VM Monitoring:	Disabled
Application Monitoring:	Disabled

[Advanced Runtime Info](#)[Cluster Status](#)[Configuration Issues](#)

vSphere DRS

Migration Automation Level:	Fully Automated
Power Management Automation Level:	Off
DRS Recommendations:	0
DRS Faults:	0
Migration Threshold:	Apply priority 1, priority 2, and priority 3 recommendations.
Target host load standard deviation:	<= 0.094
Current host load standard deviation:	0.016 ( Load balanced)

[View Resource Distribution Chart](#)[View DRS Troubleshooting Guide](#)

Storage

Storage resources Status Drive Type Can

Recent Tasks

Name, Target or Status contains:

Name	Target	Status	Details	Initiated b
------	--------	--------	---------	-------------

KTLO

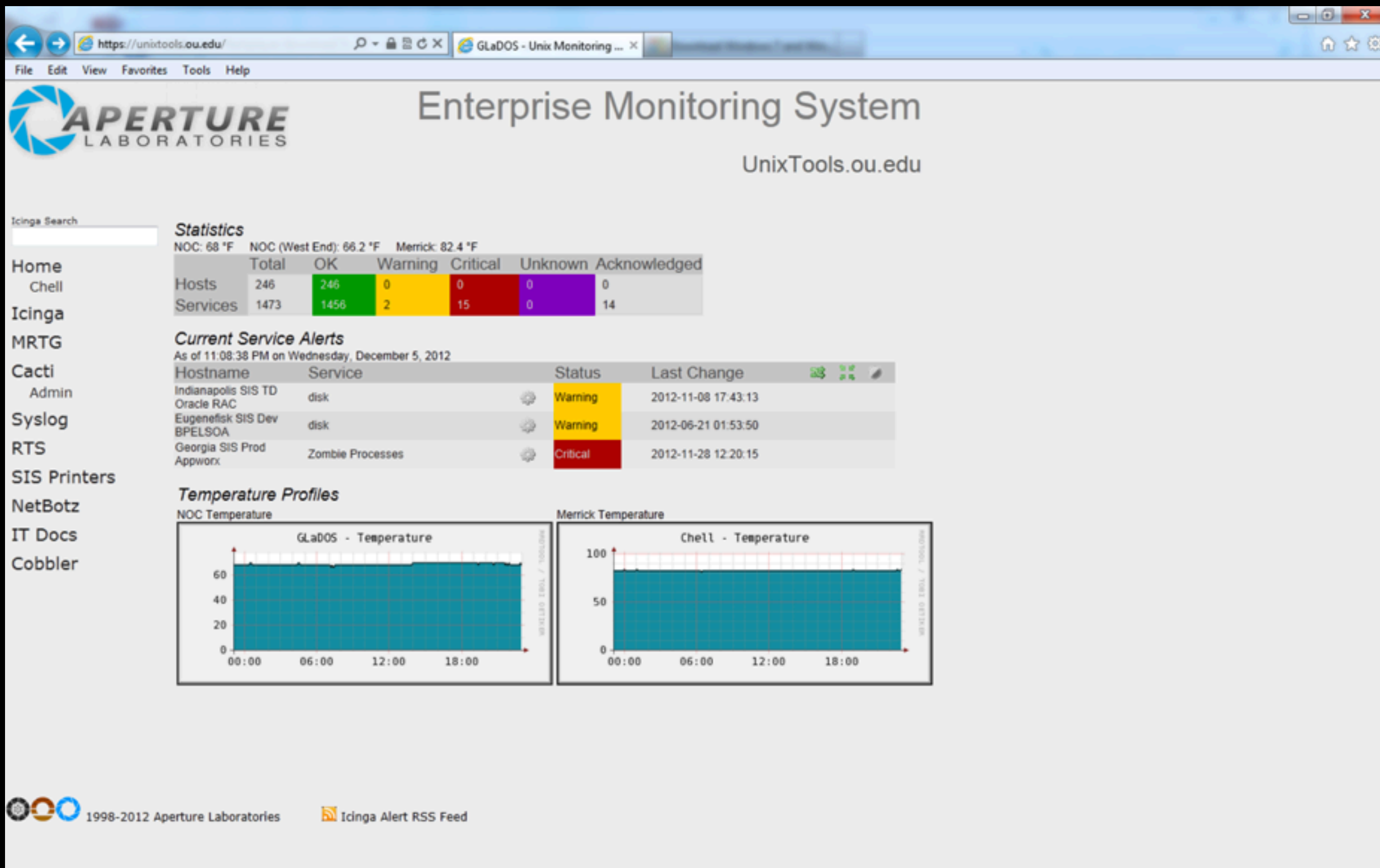
Operations Considerations

- Event Management
- Incident Management
- Request Fulfillment

Tools of the trade.



Friday, December 7, 12



Recycle Bin recipebook

IP Softph 2050

iTunes

QuickTime Player



VMWare Share


VMWare vSphere

VPN Client

OITM

Share Home

Site Actions   Browse Page

 INFORMATION TECHNOLOGY IT Home > Home

IT Home IT HSC IT Norman IT Services IT Tulsa Shared Services

Help

Lists

- Roster
- HSC Roster
- Norman Roster
- Tulsa Roster

Announcements

Calendar

Docs

- Branding Materials
- North Campus Map and Directions
- Newsletter Archives

Links

SharePics

- SuperComputingSymp2 012
- WomenIT

shareit

Welcome to IT!

Resources we have in common... Please let us know what you would like to see posted at this site. Thanks!

-sharepoint@ou.edu

Getting Started with SharePoint 2010

Share Help Site - Useful links and short videos for SharePoint 2010


- MS Course: Making the Switch to 2010
- Video: Making the Switch to 2010 (7 min)

https://itd... Main Page - Infrastructure ...

File Edit View Favorites Tools Help

Geor1832 > My talk > My preferences > My watchlist > My c

Main Page Enterprise Infrastructure Services Patchlist How To(s) Fun DBAs

 INFORMATION TECHNOLOGY

Main Page

Page Discussion Edit History Move Watch

Contents [hide]

- 1 Welcome to OU-IT's Unix group!
 - 1.1 Front line activities
 - 1.2 labs.it
 - 1.3 Future activities
 - 1.4 Resources for your daily use
 - 1.5 Registering on the wiki

Welcome to OU-IT's Unix group!

This wiki is a place to document, share and collaborate any information relating to the activities of the Unix/ Linux centric efforts.

Things we have learned about *nix:

https://itdocs.ou.edu/index.php/Main_Page

Only be friendly - it's just nicer about its friends

So, you want to be a
systems engineer?

May 20, 2010 4:21 am



Mount Everest, Nepal

Summit

Max is now
Here
21.5.10
7PM Everest
Time

ther items in the 3D viewer

Friday, December 7, 12

Questions?